

Dual Remote Filtration System



Increased Oil Capacity

The trend to downsize engines over the past several years has significantly reduced oil sump capacities. By installing the dual remote system, oil sump capacity can be increased up to 50 percent.

By adding more oil to the system, less strain is put on the oil and its additives. This dramatically increases the oil's service life.

Improved Accessibility

The dual remote mount is designed to make filter changes easy and convenient. It accomplishes this by using a remote filter mount that is easily installed in an accessible area of the engine compartment.

The mount is connected to the engine block by two oil lines and a special spin-on oil filter adapter.

The spin-on adapter replaces the engine's full-flow filter, using machined thread adapters that allow the dual remote system to fit about 98 percent of all car and light truck applications in the United States. Ports in the adapter provide both a source of oil and a place to return it to the engine.

Increased Filter Size

Many auto manufacturers have been using smaller full-flow filters to help squeeze their engines into tighter engine compartments. But reducing a filter's size severely limits its service life and contaminant-holding capacity.

The dual remote mount moves the oil filter away from a tight-fitting area of the engine compartment into one where more room is available. In many installations, it is very likely that a much larger full-flow filter can be used. A larger full-flow filter allows for better oil flow, increases dirt-holding capacity and provides longer service life than a smaller filter does.

Oil filtration is critical to engine life. Abrasive particles in dirty oil can quickly destroy critical components and ruin precision clearances in an engine if not removed through filtration.

Today's engines, however, are designed with smaller, lower-capacity oil filters which are harder to get to for servicing. This means less efficient filtration and a reluctance to change filters at regular intervals, leading to a build-up of dirt in the oil.

The AMSOIL Dual Remote Oil Filtration System is designed to provide superior filtration efficiency, increase oil capacity and improve oil filter accessibility.

Superior Filtration Efficiency

A vehicle's regular oil filter is a full-flow filter. This means that all the oil

pumped by the engine must pass quickly through the filter before it reaches the engine. This high flow demand limits the size of particles conventional filters can effectively remove.

Particle size is measured in units called microns. A decent full-flow filter will effectively remove particles down to about 25 microns. But studies have shown that over 60 percent of all engine wear is caused by particles in the 5 to 20 micron range.

AMSOIL Ea By-Pass Oil Filters remove particles less than one micron, keeping the oil free of virtually all wear-causing particles.

The dual remote system combines both full-flow and by-pass filtration on one convenient mount. With this system, all the oil is super-filtered, and more often.

By-Pass Kit BMK23
Recommended Filters (1) EaBP90, EaBP100 or EaBP110 and (1) Ea015, Ea026, Ea034, Ea042, Ea057 or Ea096 (filter-type depends on clearance available)
Applications Automotive and light-duty trucks
 Spin-on adapters and filters sold separately

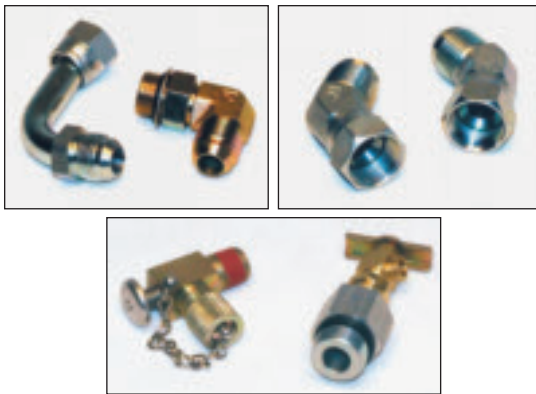
By-Pass Kit BMK25
Recommended Filters (1) EaBP100 and (1) Ea026
Applications 5.9L and 6.7L Cummins diesels
 Spin-on adapter and filters included

By-Pass Kit BMK26
Recommended Filters (1) EaBP100 and (1) Ea026
Applications 6.9L, 7.3L and 7.5L International diesels
 Spin-on adapter and filters included

By-Pass Kit BMK27
Recommended Filters (1) EaBP100 and (1) Ea026
Applications Duramax/Isuzu 6.6L diesels
 Spin-on adapter and filters included

Special Fittings

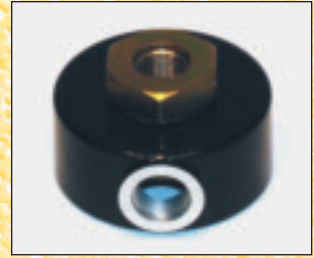
Angled fittings are available from AMSOIL INC. These may make certain installations easier. Ninety-degree (BK21) and 45-degree (BK22) fittings can be ordered for attaching oil lines to the spin-on adapter and remote mount. A petcock valve (BK13) or deluxe oil sampling valve (G1570 & BP209 fitting) makes oil sampling simple.



Installation Tips

Spin-On Filter Adapters

The Dual Remote Filtration System requires the use of a spin-on filter adapter. The spin-on adapter provides the link from the by-pass filter mount to the full-flow filter thread on the engine block. Spin-on adapters are required for installation of a



BMK23 kit and are sold separately. BMK25, BMK26 and BMK27 kits include the appropriate spin-on adapter kit. If you have questions regarding the installation of an AMSOIL By-Pass Filtration System, call the AMSOIL Technical Services Department at (715) 399-TECH.

BMK Spin-On Adapter Kits

| PART # | THREAD | APPLICATIONS |
|--------|--------------|------------------|
| BK295 | 3/4"-16 | General Use |
| BK296 | 1 3/16"-16 | General Use |
| BK297 | 18mm x 1.5mm | General Use |
| BK298 | 20mm x 1.5mm | General Use |
| BK299 | 22mm x 1.5mm | General Use |
| BK300 | 1"-16 | Cummins Diesel |
| BK301 | 1-1/2"-16 | PowerStroke 7.3L |
| BK302 | 1 3/16"-16 | Duramax 6.6L |

Extra Oil Hose

Twelve feet of hose is supplied with each kit. If necessary, additional hose is available from AMSOIL by the foot (BP350).

You can also buy a high-quality hydraulic hose at your local hose supplier. The hose must meet the following minimum specifications: • 1/2" inside diameter • 300°F working temperature • 450 p.s.i. working pressure • 1800 p.s.i. burst pressure. Note: Hose and hose fittings supplied with kit are matched. Hose other than that supplied by AMSOIL may not be compatible with the hose fittings, which could result in equipment damage.



Contact your AMSOIL Dealer for more information on AMSOIL products or to place an order. You may also order direct by calling AMSOIL INC. at 1-800-956-5695 and providing the referral number listed here. ▼

Referral # **488994**

AMSOIL Nationwide Distribution Services

JD SYNTHETICS - Jim Dufeck

REFERRAL - DEALER # 488994 / Verizon 612-209-0917

www.jimdoil.com / jdsynthetics@gmail.com